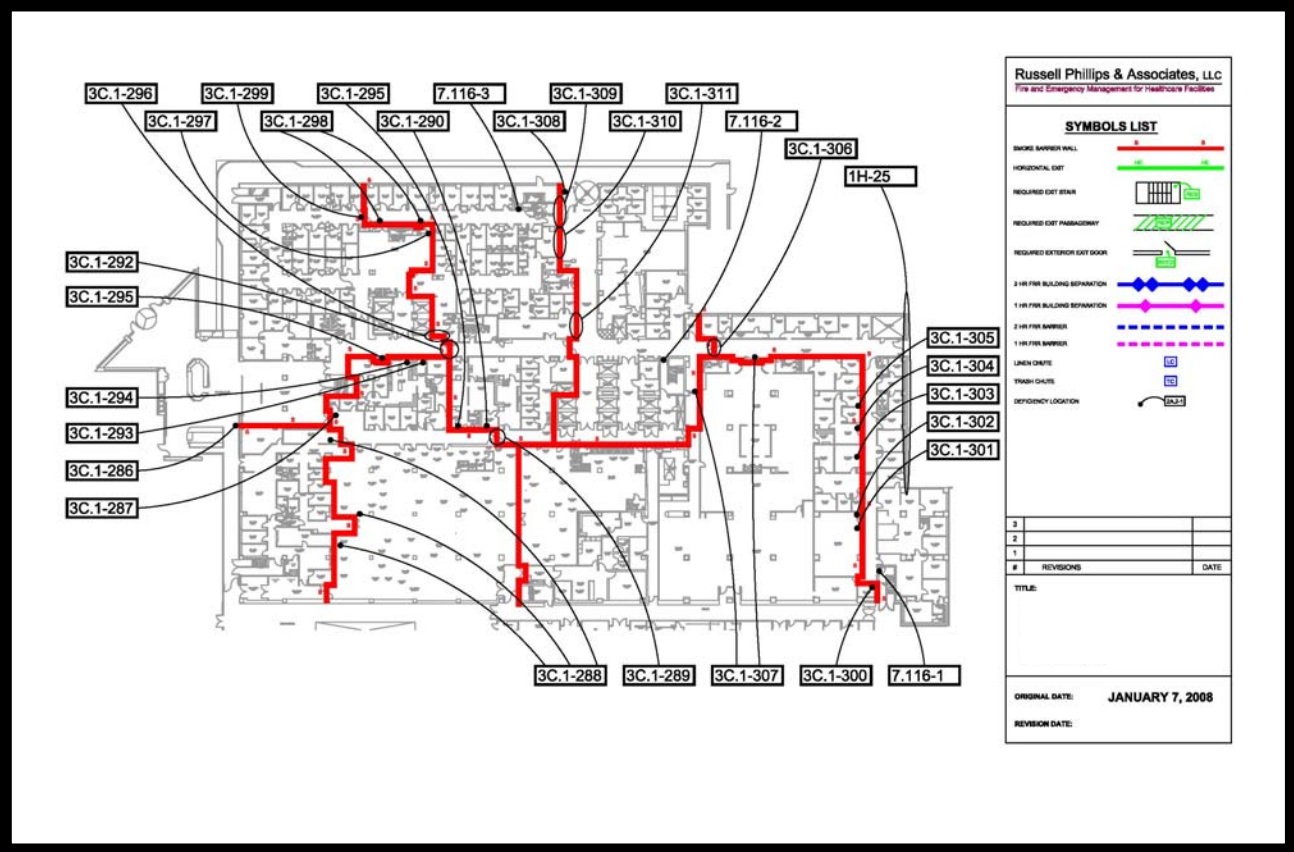


Russell Phillips & Associates, LLC

Fire and Emergency Management for Healthcare Facilities

Joint Commission SOC™ & Internet Management System



Healthcare systems are continually challenged to assess their compliance with the *Life Safety Code*®, understand any unique interpretations and exceptions, and ensure that all cost effective measures have been taken to comply with the Code. Russell Phillips & Associates' **SOC & Internet Management System** provides healthcare facilities with high-level technical consulting and web-based management tools that:

- ❑ Facilitates continuous readiness,
- ❑ Facilities meet the Joint Commission eSOC requirements through the ability to upload directly to the ePFI,
- ❑ A customized SOC, and
- ❑ Presentation-ready *Joint Commission SOC™* documents.

Principals: Russell Phillips • David Hood • Scott Aronson

Facility Survey Date: 6/23/2002 **IMPORTANT: 24 open locations for ALL PREVIOUS Surveys**

R. Phillips & Associates, LLC
500 CrossKeys Office Park, Fairport, NY 14450

The Joint Commission Forms

- Basic Building Information (BBI - Part II)**
 - ↳ Floor Plans
 - ↳ Equivalencies & Correspondences
- Life Safety Assessment (LSA - Part III)**
 - ↳ Construction Table
 - ↳ Hazard Table
- Plan For Improvement (PFI - Part IV)**
 - ↳ eSOC Export Wizard
 - Locations awaiting Export: 26 (view)
 - Last Export was on: Never
 - 11 Locations **Failed** the eSOC Data Check and need to be corrected. (view)

Facility Tools

- ↳ **Red Flag Reports**
 - ↳ Missed/Busted Locations
 - ↳ Locations Due in 1 Month
 - ↳ Locations Due in 3 Months
- ↳ Search for Locations

Our on-site assessment services, combined with the **SOC Internet Management System**, will enable a healthcare facility to:

- ❑ *Gain access to some of the top healthcare **life safety experts** in the country to capitalize on unique code interpretations and exceptions.*
- ❑ *Prepare "**RED FLAG**" reports to ensure timeliness in meeting agreed upon dates, and avoid a non-compliant (formally "Busted Plan") plan.*
- ❑ ***Protect leadership** from future citations under the LD (Leadership) standards.*
- ❑ ***Minimize risk**, stemming from staff turnover and lack of accountability, via a single, customized system that coordinates all SOC progress reports, documentation and floor plans.*
- ❑ ***Monitor progress** of action plans across multiple facility locations.*
- ❑ *Present "clean" floorplans that identify smoke/fire barriers to enhance overall fire and evacuation plans.*

"My experience with Russell Phillips & Associates has been very professional. They are very responsive and detailed. In an emergency – they make the time. If you want a true assessment of your facilities – Russell Phillips & Associates is the team for you. You need to realize when you ask for a review that you may be uncovering some new knowledge about your facility. You need to be ready to hear that information and you want to know you can trust that outside source. I stake my career on Russell Phillips & Associates. "

Michael Wood, CHFM
Director of Maintenance & Safety
Oklahoma University Medical Center

For more information, please contact us at 585-223-1130, via e-mail at info@phillipsllc.com or visit www.phillipsllc.com.